



**Namdhari Seeds™**  
Seeds for a better future







## Sri Satguru Jagjit Singh Ji

Spiritual Head of the Namdhari Sikhs  
(1920-2012)

“Through his support, vision and guidance, Namdhari’s has emerged into a fully integrated agri business brand whilst proudly being a source of sustenance to thousands.”

# About US

Our Journey, Our Pride

## Namdhari’s Group

The Namdhari’s Group has today evolved into a diversified business enterprise catering to the needs of the entire seed-to-plate value chain. By sowing the seeds of a successful business enterprise with great passion and clarity of vision, His Holiness Sri Satguru Jagjit Singh Ji established the Namdhari’s Group over 3 decades ago. In 1982, he then asked his nephew (now His Holiness Sri Satguru Uday Singh Ji) to take the reins of the operations, and under his guidance, the group formally began its professional journey.

Since the inception of the company, our guiding belief has been that entrepreneurship is a powerful vehicle to ‘do good’. The more successful businesses are, the more they are able to do to support the growth of their shareholders, employees and the communities they operate in.

By virtue of being in the Agri sector, our success in developing market-leading hybrids, has created a pull for our seeds within the farmer community, in India and Internationally. Consequently, over the past 3 decades, millions of farmers have benefited from higher yields, better quality seeds and ultimately better market realization, which in turn has contributed to their prosperity.

The company has utilized its own unique strengths and accumulated knowledge to size the market by separating its business activities into four segments: seeds, fresh production (domestic), fresh production (exports), and retail.



One of India's largest breeders & producers of Hybrid seeds for Fruits and vegetables.

Cultivating in all agro-climatic regions of India

15,000 dealer points and availability across the country.

Our seeds are used by 5,00,000+ farmers

State-of-the-art Research Lab

In-house growing

Transforming rural agriculture across the country.

India's largest fully integrated Dairy operation. Producing a range of traceable products.

# Seed-to-Plate Leadership

Over the years, the **Namdhari's Group** has nurtured and developed sustainable and comprehensive value chains that enable us to service the markets in the best possible way.

We will continue to use our value chain capabilities to curate products on the **fresh, dairy, bakery, or Fast-Moving Consumer Goods (FMCG)** side continuing to stay ahead of the curve.



Our farm houses 1500+ cows



Integrated cold-chain operations

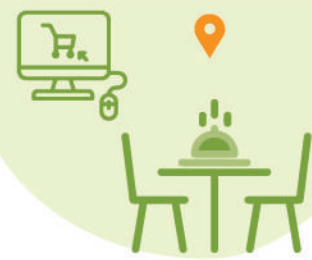


India's first Global GAP Certified Company.

Temperature controlled packing centres



Supplying to World-leading QSRs.



Retail, E-commerce & Dining



India's largest exporters for contract seed production

Exporting fruits and vegetables world-wide. Bringing India's best produce directly from farmers.





# Business Verticals

## SEEDS



### A truly Indian Multinational Seeds Company

One of the largest vegetable seeds companies in India fulfilling the needs of vegetable cultivation spread over an area of 2,00,000 hectares catered by over 15,000 dealer points globally.

## FOOD & AGRI



Production, export and domestic retailing of fresh Fruits & Vegetables. With access to over 5,000 acres of farms across India, maintained by 3,000 farmers, Namdhari's Fresh handles over 36,000 tons of fresh fruits and vegetables every year.

## DAIRY



### Integrated Single Origin Dairy Farm.

Our Range of Dairy Products are available across various retail channels.

## FMCG



The final step of Seed-to-Plate concept of living, from the House of Namdhari's.

## RETAIL



India's only Vegetarian Omni channel Retailer.

**30 Exclusive Stores** across Bengaluru.

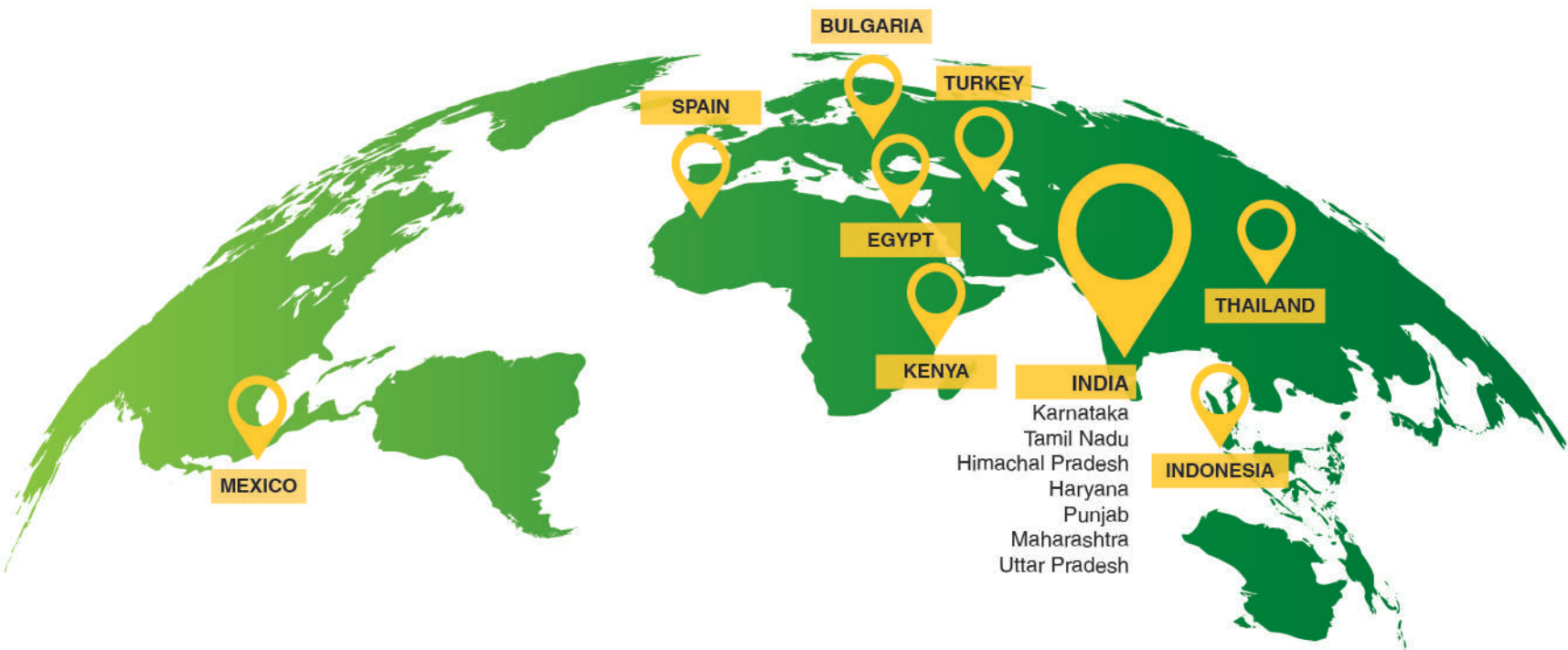




# OUR OWN FARMPRINT

Spreading our roots, expanding our farms Nationally  
and Internationally to grow the best.

Cultivating our  
Legacy of Authenticity.







# Namdhari Seeds

As a Namdhari's Group Enterprise, Namdhari Seeds began as a contract seed producer for countries around the world. Through our experiences and successes, we pursued research and development of hybrid crops, pioneering hybrid seed production in India.

Today, with a strong brand heritage, investment in R&D, unparalleled distribution depth and a vast product portfolio, Namdhari seeds has established itself as a preferred partner to several global seed players. Our future-forward technologies and market-disrupting innovations have made us the largest contract seed producers across the globe.

We have relentlessly worked towards building a community of millions of farmers with small land holdings by harnessing our innovative and technical skills, R & D expertise, impacting the lives of millions. Namdhari Seeds has a presence in over 15 countries spanning Southeast Asia, the Middle East and Europe.





# At a Glance

## Our Presence across the entire Seeds Value Chain

Leading Vegetable Seeds  
Breeder, Producer and  
Distributor in Indian market.

Commercialized  
more than  
**500**  
varieties

## Production

### In-house Production Capability

Seed production activity  
spread across 8 main  
locations within the country.

### World Class Contract Production Capability

One of the  
**LARGEST  
CONTRACT  
PRODUCER**  
of seeds in India.

## Strong R&D

Wide repertoire of high  
quality & diverse  
Germplasm.

In-house infrastructure  
to support breeding  
programs.

## Reach

**17**  
Marketing Offices  
across India

**13**  
International  
Marketing  
Locations





# Research & **Development**

## **Pathology Lab**

A fully equipped pathology lab to carry out disease screening for lines / hybrids to be marketed in India and abroad.

## **Molecular Biology Lab**

A fully functional Molecular Biology lab to carry out Marker Assisted Selection (MAS) and purity test on hybrid seeds coming from production department.

This Lab is equipped for testing more than 5,00,000 Data Points a year.

## **Tissue Culture Lab**

Tissue Culture facility is used for multiplying parent stocks in flower crops for contract productions and also to help breeders maintain male sterility and to do embryo rescue.

**DEDICATED RESEARCH & DEVELOPMENT FACILITY**





# Quality Control

Our QC Lab  
has ISTA  
accreditation  
since 2003.



**ISTA**  
Seed Quality Assurance

germination

genetic  
purity

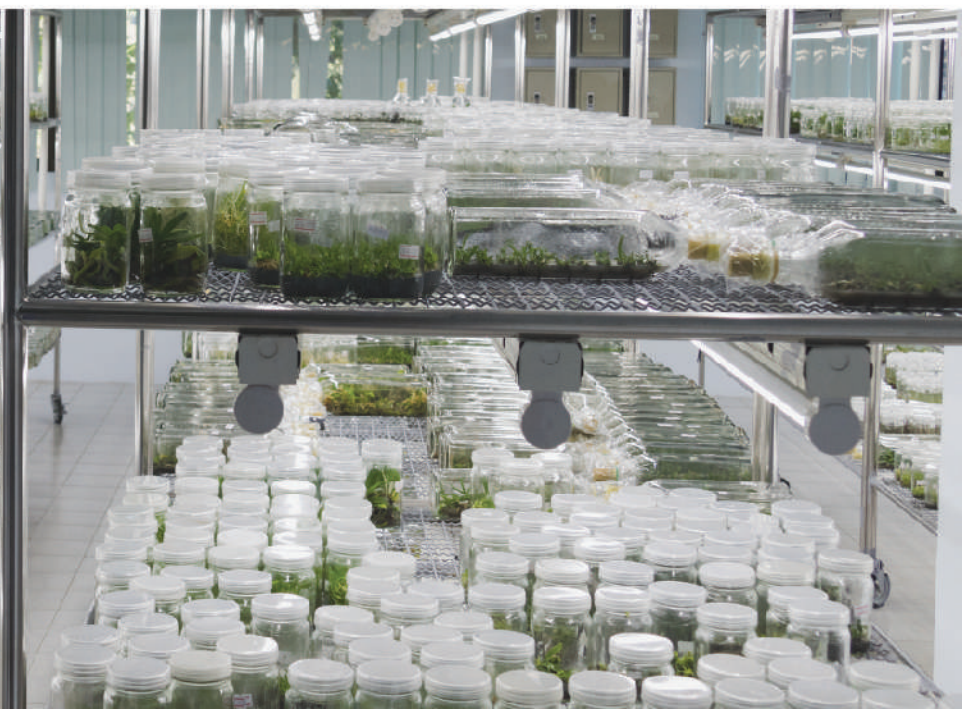
disease  
screening

physical  
purity

Handles  
**[ 50,000 ]**  
Samples

**[ 30 ]**  
Species of  
Agricultural and  
Vegetable crops

**[ 37 ]**  
Flower crops





# Breeding and Testing Locations

Over the decades, Namdhari Seeds has launched countless successful, superior hybrid crops across the world, each with excellent yield potential, adaptability, and resistance to disease. Our Breeding Program professionals comprise a highly dedicated and skilled team who work tirelessly to push boundaries.

We are committed to not damaging natural and productive resources, but to rejuvenate and enhance biodiversity by adapting crop rotations, green manuring, integrated pest management and avoiding the use of any chemical or synthetic sources that affect our environment.



Bangladesh

Myanmar

Thailand

Indonesia

Bulgaria

Egypt

Turkey

Spain

Mexico





# Breeding Programmes

**30**

In-house breeders

Over  
**25**

different programmes



## TOMATO

Designed to provide over 150 hybrids for yearly testing, out of which 3 to 5 enter pre-commercial trials. **Green house tomatoes in Mexico and Turkey.**



## CHILLI

**Green chili hybrids** - a wide array of segments for green-fresh market.

**Red chili hybrids** - varieties differ in colour and pungency for red-dry market.



## OKRA

Developing hybrids with multiple virus resistance (YVMV, ELCV and petiole bending) with tender dark green spineless fruits.



## WATERMELON

**Regular size (fruit weight 10-12kg)**, tolerant to Bud Necrosis virus (BNV), having good shipping qualities for longer transport for the domestic market.

**Personal size (family size)** watermelons with different rind patterns targeting the vast Middle East market.

**Triploid watermelons** developing seedless watermelons in different patterns and sizes for different markets.



## HYBRID CORN

Tropical Corn breeding for India. Developing hybrids for Sweet Corn and Waxy Corn focused on India and SE Asia.



## MELONS

Major focus is on regular Cantaloupe (orange flesh), Harper (increased shelf life) and Galia Melons (green flesh) with good taste and aroma. Having good transport and shipping qualities.



## GOURDS

Efforts to develop heat and multi virus tolerant Bitter Gourd, Bottle Gourd, Ridge Gourd, Sponge Gourd hybrids for summer cultivation.



## CUCUMBER

Developing green and light green Cucumbers for various markets in India and SE Asia, with major emphasis on heat set and virus tolerance.



## FLOWERS

Joint venture with a large flower seed developer in Europe.



## HYBRID RICE

Breeding efforts in progress to develop:

- Early, mid and late maturity programs across India.
- Selected Rice development for certain segments.



## WHY PRODUCE WITH US?



### Intellectual Property

More than 3 decades of exhibiting high levels of business ethics, respecting IP and providing dedicated human resource and operations



### Organic Seed Production

Certified by Control Union and Ecocert in organic seed production process with requirement of norms for NPOP & NOP for both open field and green house seed production



### Grower Network

Dedicated human resource for contract production at all levels of hierarchy



### Equal Opportunity Employer

Namdhari Seeds does not discriminate in employment practices basis color, religion, gender, age, nationality, sexual orientation, marital or veteran status, disability or any other legally protected status



### Quality Control & Certifications

Necessary seed treatment in compliance with International Statutory Regulations. Global GAP. ISTA accredited laboratory for issuing Orange international Certificate (OIC) for seed lots, in-house facilities for seed health testing for all crops for screening major diseases



### Integrated Seed Health

With pathogen-free production and ISTA/ISHI-VEG standards



### Zero Child Labour

Namdhari Seeds does not tolerate child labour in any of our working places including contracted seed production fields. We conduct stringent routine audits to ensure full adherence to this policy



### Coding for Seed Production

Centrally controlled and monitored seed coding processes in place



### Infrastructure

Largest owned land bank which includes open fields, greenhouses & nethouses dedicated for contract seed production



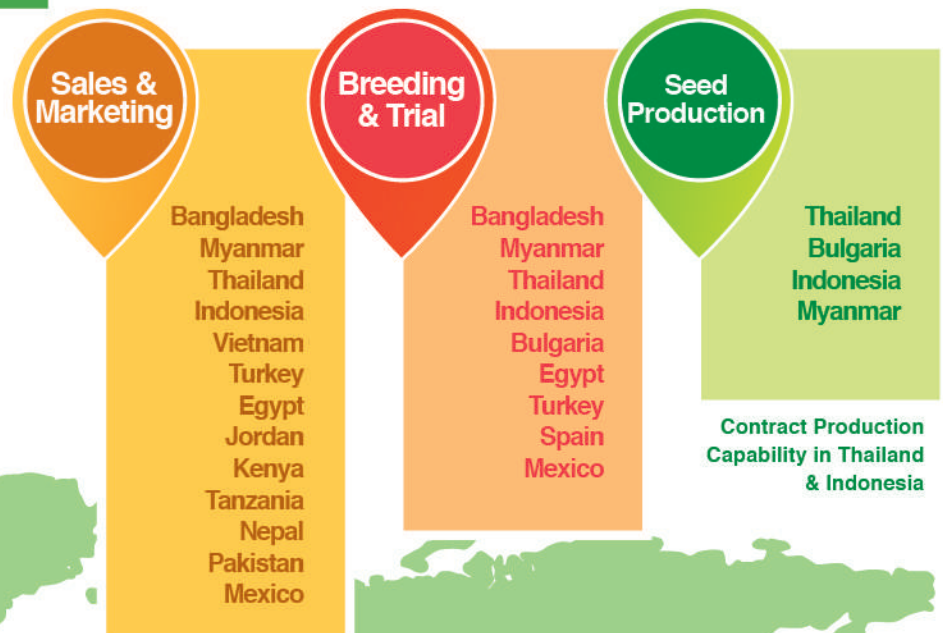
### Dedicated Production Locations

Dedicated seed production locations for the purpose of contract production

Our future-forward technologies and market-disrupting innovations make us the top preference for contract seed producers across the globe.



# International Footprint

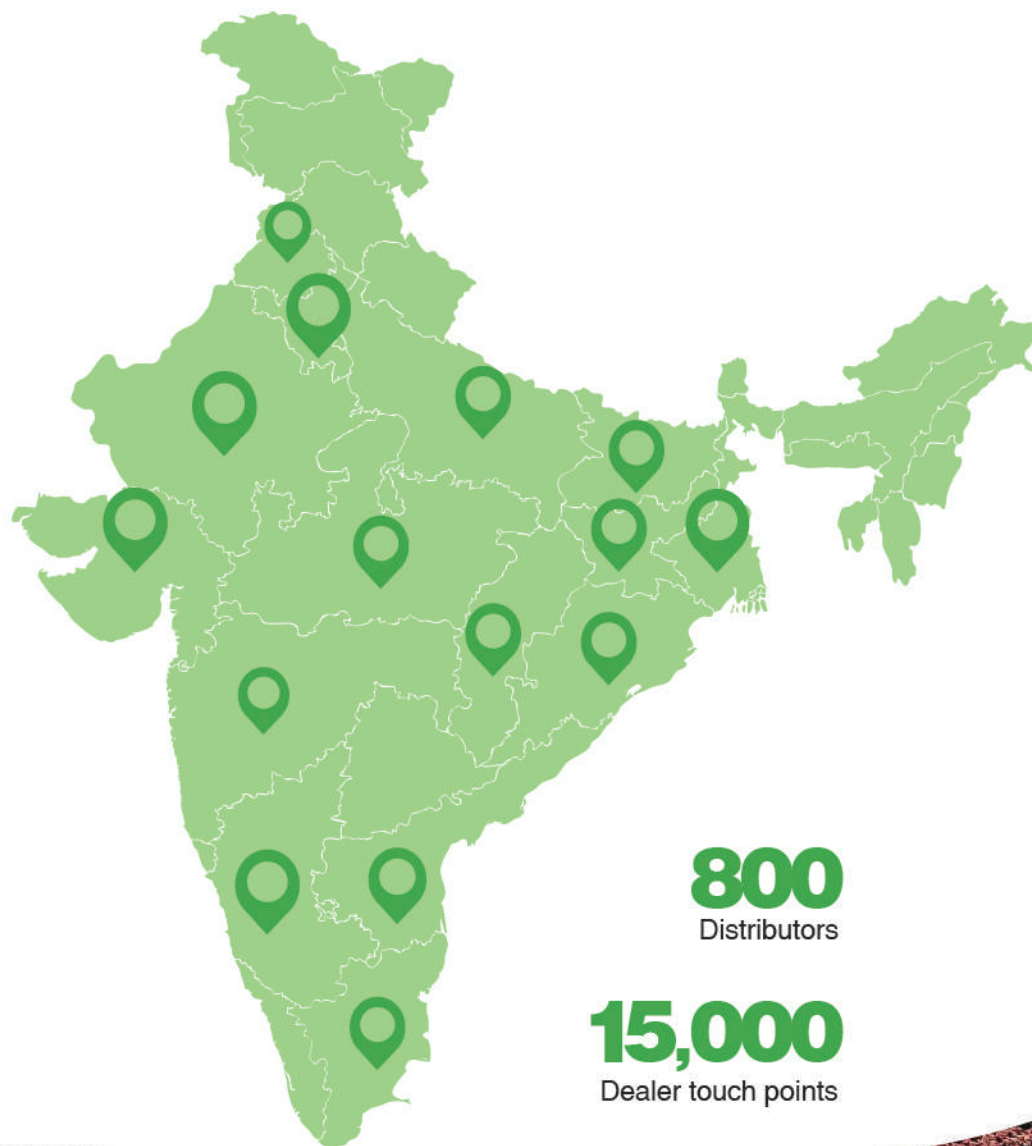






# Domestic Marketing **Presence**

Andhra Pradesh  
Bihar  
Chhattisgarh  
Gujarat  
Haryana  
Jharkhand  
Karnataka  
Madhya Pradesh  
Maharashtra  
Odisha  
Punjab  
Rajasthan  
Tamil Nadu  
Uttar Pradesh  
West Bengal



**800**  
Distributors

**15,000**  
Dealer touch points









# Tomato





# NS 5002 (1068) (F1)

Determinate hybrid bearing compact oval fruit, suitable for long-distance shipping. Recommended for rainy and winter seasons, showing intermediate resistance to TyLCV.



# NS 501 (F1)

An ideal hybrid suitable for tropics with tolerance to bacterial wilt and TyLCV. The determinate plants are vigorous with good foliage cover producing extraordinary yields.

T  
o  
m  
a  
t  
o

## Determinate Oval

Variety	Maturity (Days after sowing)	Plant type	Fruit: Unripe shoulder colour	Fruit: Mature colour	Fruit: Shape	Fruit: Weight (grams)	Fruit: Firmness	Season recommendation
NS 5002 (1068) (F1)	65-70	Determinate	Light green	Deep red	Oval - Saladette	90 - 100	Excellent	Kharif, Rabi
NS 5072 (F1)	65-70	Determinate	Light green	Deep red	Saladette	100 - 110	Excellent	Kharif, Rabi, Spring-Summer
NS 5016 (F1)	70-75	Tall Determinate	Light green	Deep red	Oval	90 -100	Excellent	Kharif, Rabi, Spring-Summer
NS 501 (F1)	65-70	Tall Determinate	Light green	Medium red	Oval - Saladette	80 - 90	Good	Kharif, Rabi



## NS 585 (F1)

Acidic type hybrid bearing flat round fruits with green shoulders. An exceptional yielder with medium-late maturity showing intermediate resistance to TyLCV.



## NS 962 (F1)

Prolific bearer with green shoulder, sour in taste showing intermediate resistance to TyLCV.



### Determinate Round

Variety	Maturity (Days after sowing)	Plant type	Fruit: Unripe shoulder colour	Fruit: Mature colour	Fruit: Shape	Fruit: Weight (grams)	Fruit: Firmness	Season recommendation
NS 5022 (F1)	60-65	Determinate	Light green	Deep red	Flat round	90-100	Excellent	Kharif, Rabi
NS 5013 (F1)	65-70	Determinate	Green shoulder	Deep red	High round	90-100	Medium	Kharif, Rabi
NS 962 (F1)	60-65	Determinate	Green shoulder	Deep red	Round oblate	90-100	Good	Kharif, Rabi
NS 582 (F1)	55-60	Short Determinate	Green shoulder	Deep red	High round	90-100	Good	Kharif, Rabi
NS 526 (F1)	60-65	Determinate	Green shoulder	Deep red	Flat round	110-120	Excellent	Kharif, Rabi
NS 585 (F1)	70-75	Tall Determinate	Green shoulder	Deep red	Flat round	80-90	Good	Kharif, Rabi
NS 504 (F1)	55-60	Determinate	Uniform green	Deep red	Flat round	80-90	Medium	Spring summer
Swaraksha (F1)	65-70	Determinate	Light green	Deep red	Square round	100-110	Medium	Kharif, Rabi



# NS 4266 (F1)

Indeterminate type hybrid bearing round oblate fruits with excellent firmness. Can withstand heat and shows intermediate resistance to TyLCV.



T  
o  
m  
a  
t  
o

## Indeterminate Round

Varley	Maturity (Days after sowing)	Plant type	Fruit: Unripe shoulder colour	Fruit: Mature colour	Fruit: Shape	Fruit: Weight (grams)	Fruit: Firmness	Season recommendation
NS 4266 (F1)	65-70	Indeterminate	Light green	Deep red	Round oblate	100-120	Excellent	Kharif, Rabi
NS 4637 (F1)	70-75	Indeterminate	Light green	Deep red	Flat round	110-130	Excellent	Kharif, Rabi



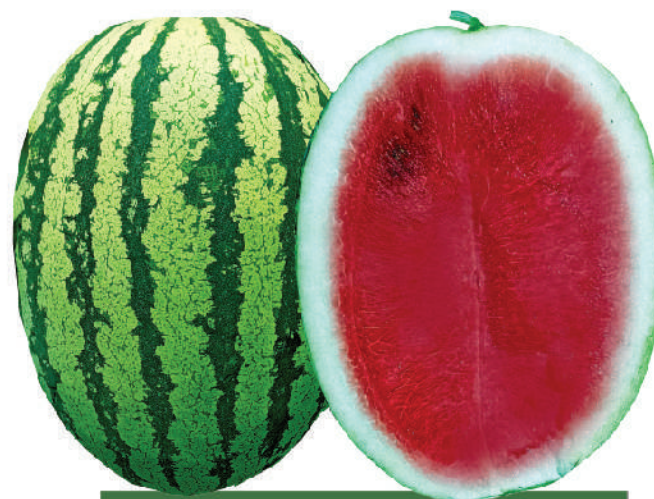
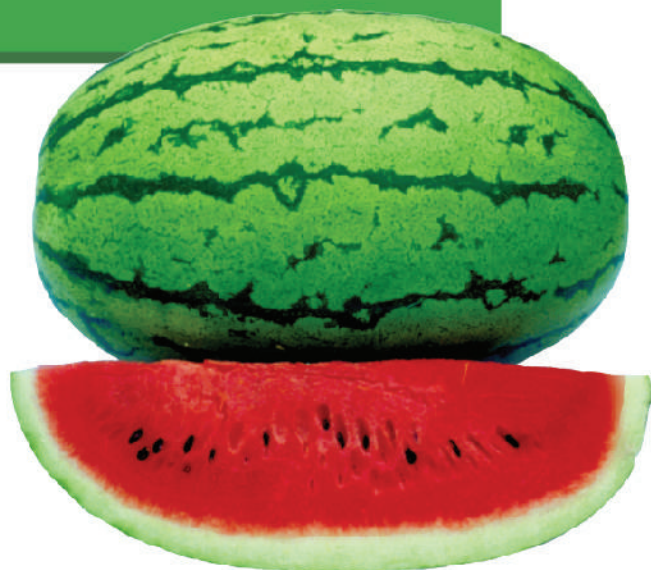
# Watermelon





## NS 295 (F1)

Widely adaptable hybrid with mid-early maturity exhibiting good shipping and keeping qualities..



## NS 7057 (F1)

Early maturing hybrid with wide adaptability. Yields uniform-sized fruits with good keeping quality and suitable for long-distance transportation.

## Jubilee

Variety	Maturity (Days after sowing)	Rind pattern	Fruit shape	Flesh colour	Average fruit weight (Kg)	Brix (%)
NS 295 (F1)	80-85	Light green with green stripes	Oblong	Crimson red	9 - 10	12-13
NS 750 (F1)	75-80	Light green with dark green stripes	Oblong	Crimson red	8 - 10	12-13
NS 777 (F1)	75-80	Light green with dark green stripes	Oblong	Crimson red	9 - 10	12-13
<b>NEW</b> NS 7057 (F1)	80-85	Light green with dark green stripes	Oblong	Deep crimson red	7 - 9	12-13
<b>NEW</b> NS 7076 (F1)	80-85	Light green with bluish green stripes	Oval	Deep crimson red	6 - 8	11-12
NS 775 (F1)	80-85	Light green with bluish green stripes	Oblong	Crimson red	9 - 10	11-12



# NS 23 (IBH) (F1)

Heavy-yielding hybrid producing oblong-shaped fruits. Attractive bluish-black rind pattern, weighing 3 to 3.5 kgs with sweet granular flesh (12 -13% TSS).



## Icebox

Variety	Maturity (Days after sowing)	Rind pattern	Fruit shape	Flesh colour	Average fruit weight (Kg)	Brix (%)
NS 7310 (Joy) (F1)	58-60	Bluish black	Oval to Oblong	Deep crimson red	3 - 5	12-14
NS 23 (IBH) (F1)	60-65	Bluish black	Oblong	Deep crimson red	3 - 5	12-13
NS 34 (IBH) (F1)	60-65	Bluish black	Oblong	Deep crimson red	3 - 5	12-13
NS 739 (F1)	60-65	Dark green with bluish green stripes	Oval to Oblong	Deep crimson red	4 - 5	12-13
<b>NEW</b> NS 7032 (F1)	60-65	Bluish black	Oblong	Deep crimson red	6 - 7	12-13
<b>NEW</b> NS 7207 (F1)	60-65	Bluish black	Oblong	Deep red	3 - 4	13-14



# NS 200 (F1)

Vigorous medium early hybrid with an attractive dark green rind and deep red flesh. A good yielder, it is suitable for long-distance shipping.



Watermelon

## Sugarbaby

Variety	Maturity (Days after sowing)	Rind pattern	Fruit shape	Flesh colour	Average fruit weight (Kg)	Brix (%)
<b>NEW</b> NS 7018 (F1)	80-85	Dark green with visible stripes	Round to oval	Crimson red	8 -10	13-14
NS 200 (F1)	80-85	Dark green with visible stripes	Round to oval	Deep red	8 -10	12-13



## NS 62 (F1)

Highly adaptable, high-yielding hybrid with strong vines and good leaf cover. The fruits are large, oval to oblong in shape having light green rind with broad dark green stripes. Flesh is crimson red in colour with a sweet taste ( 12-13% TSS) exhibiting good keeping and transport qualities.



## Crimson sweet

Variety	Maturity (Days after sowing)	Rind pattern	Fruit shape	Flesh colour	Average fruit weight (Kg)	Brix (%)
NS 62 (F1)	85-90	Light green rind with dark green broad stripes	Oval to Oblong	Crimson red	12-13	12-13









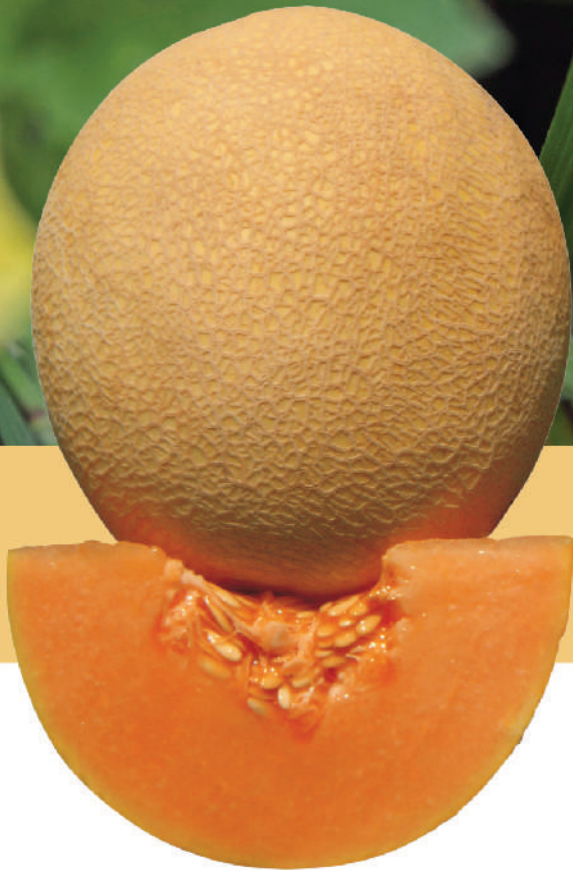
# Muskmelon





# NS 910 (F1)

Hybrid with short, vigorous plants and attractive round fruit with good netting. Flesh is orange, sweet with good texture and very tight seed cavity exhibiting long shelf-life and good transport qualities.



M  
u  
s  
k  
m  
e  
l  
o  
n

## Cantaloupe

Variety	Maturity (Days after sowing)	Fruit shape	Flesh colour	Fruit surface	Fruit weight (Kg)	Sweetness TSS (%)
NS 910 (F1)	60-65	Round	Orange	Netted, cream	1.5 - 2	12-13



## SUNNY PLUS (F1)

Excellent fruit setting with good sweetness and flavour. Attractive fruit with golden yellow rind and green flesh.



## Galia

Variety	Maturity (Days after sowing)	Fruit shape	Flesh colour	Fruit surface	Fruit weight (Kg)	Sweetness TSS (%)
SUNNY PLUS (F1)	60-65	Round	Light green	Netted, yellow	1-1.5	13-14









# Cucumber





## NS 9 (KUK) (F1)

Multi-pistillate, parthenocarpic, strong plants bearing dark green fruits suitable for green house cultivation.



### Protected cultivation

Variety	Recommended cultivation	Plant type	Fruit length (cm)	Fruit colour
NS 9 (KUK) (F1)	Protected	Tall vigorous	16-18	Dark green
NS 4000 (F1)	Protected	Tall vigorous	14-16	Attractive whitish green



# NS 4124 (F1)

Strong, vigorous monoecious plant with good branching and more female flowers. Fruits are uniform, green, and cylindrical with no bitterness. Shows intermediate resistance to CMV and Downy Mildew.



C  
u  
c  
u  
m  
b  
e  
r

## Open Field Cultivation

Variety	Recommended cultivation	Plant type	Fruit length (cm)	Fruit colour
NS 4124 (F1)	Open field	Tall vigorous	20-22	Dark green with specks
NS 4147 (F1)	Open field	Tall vigorous	20-22	Light green with specks
NS 404 (F1)	Open field	Tall vigorous	26-28	Light green with specks
NS 415 (F1)	Open field	Tall vigorous	22-24	Light green with specks
NS 425 (F1)	Open field	Tall vigorous	13-15	Creamy white







# Chilli





## NS 2560 (F1)

A dual-purpose short-length hybrid suitable for green fresh and red dry. Intermediate resistance to LCV. Recommended for long-distance transport and exports.



## NS 2701 (F1)

Dual purpose hybrid suitable for green fresh and red dry purpose. Intermediate resistance to LCV. Red dry colour retention lasts for a long time. This hybrid is less prone to Thrips attack.



Variety	Plant habit	Usage	Maturity (Days after transplanting)	Immature fruit colour	Mature fruit colour	Fruit length (cm)	Fruit width (cm)	Pericarp thickness	Pungency
NS 2560 (F1)	Tall spreading plant	Green fresh & Red dry	65-70	Dark green	Deep red	6-7	2.0-2.1	Thin	High (60,000 SHU)
NS 238 (F1)	Tall spreading plant	Green fresh & Red dry	65-70	Dark green	Deep red	6-7	1.0-1.1	Thin	Very high (100,000 SHU)
NS 1101 (F1)	Medium tall spreading plant	Green fresh & Red dry	70-75	Dark green	Dark red	8-10	1.0-1.1	Medium thick	Very high (60,000 SHU)
NS 1701 (F1)	Tall spreading plant	Green fresh & Red dry	70-75	Dark green	Deep red	8-10	0.8-0.9	Thin	Very high (75,000 SHU)
NS 2572 (F1)	Tall spreading plant	Green fresh & Red dry	70-75	Dark green	Deep red	8-10	0.9-1.0	Thin	Very high (75,000 SHU)
NS 1701 (F1)	Tall spreading plant	Green fresh & Red dry	70-75	Light green	Dark red	8-10	0.8-0.9	Thin	Very high (75,000 SHU)
<b>NEW</b> NS 2701 (F1)	Tall spreading plant	Green fresh & Red dry	65-70	Dark green	Deep red	9-10	1.1-1.2	Thin	Medium high (60,000 SHU)



# NS 2549 (F1)

Perfectly suitable for dry purposes Has intermediate resistance to LCV. (leaf curl virus).  
Red colour in dried chili lasts for more than 12 months.



	Variety	Plant habit	Usage	Maturity (Days after transplanting)	Immature fruit colour	Mature fruit colour	Fruit length (cm)	Fruit width (cm)	Pericarp thickness	Pungency
<b>NEW</b>	NS 2707 (F1)	Tall erect	Red dry	70-75	Medium green	Bright red	9-10	1.0-1.1	Thin	High (80,000 SHU)
<b>NEW</b>	NS 2565 (F1)	Tall spreading plant	Green fresh & Red dry	65-70	Dark green	Dark red	9-10	1.4-1.6	Very thick	Medium high (55,000 SHU)
<b>NEW</b>	NS 2549 (F1)	Tall spreading plant	Green fresh & Red dry	65-70	Light green	Deep red	10-11	1.2-1.3	Thick	Medium high (50,000 SHU)
<b>NEW</b>	NS 2745 (F1)	Medium tall spreading plant	Green fresh & Red dry	60-65	Light green	Deep red	10-11	1.2-1.3	Thick	Medium high (50,000 SHU)
<b>NEW</b>	NS 2709 (F1)	Tall spreading plant	Green fresh & Red dry	65-70	Dark green	Deep red	11-12	1.1-1.2	Thin	Medium high (60,000 SHU)
	NS 230 (F1)	Tall spreading plant	Green fresh & Red dry	65-70	Light green	Red	11-13	1.3-1.4	Medium thick	Very high (75,000 SHU)
<b>NEW</b>	NS 2570 (F1)	Tall spreading plant	Green fresh & Red dry	65-70	Dark green	Dark red	12-13	1.4-1.6	Very thick	Medium high (55,000 SHU)
	NS 2505 (F1)	Tall spreading plant	Green fresh	60-65	Pale green	Deep red	14-15	1.3-1.4	Thick	Medium (30,000 SHU)
	NS 2401 (F1)	Tall spreading plant	Green fresh	70-75	Green	Dark red	15-16	1.9-2.0	Thick	Medium (30,000 SHU)







# Okra





## NS 7801 (F1)

Medium dwarf plant type with a high level of field tolerance for YVMV and ELCV. Suitable for long-duration harvest.



## NS 7772 (F1)

Excellent fruit quality, suitable for long-distance transport & exports.



## NS 862 (F1)

Tender, thin attractive fruits that make it stand out amongst all other varieties.

	Variety	Maturity (Days after sowing)	Plant habit	Internodal distance	Fruit colour	Fruit length (cm)	Disease tolerance
<b>NEW</b>	NS 7801 (F1)	42-45	Medium dwarf, vigorous plant	Short	Dark green	14-16	YVMV & ELCV
<b>NEW</b>	NS 7803 (F1)	42-45	Medium dwarf, vigorous plant	Short	Very dark green	14-16	Intermediate resistance - YVMV & ELCV
<b>NEW</b>	NS 7792 (F1)	43-47	Medium tall, vigorous plant	Medium short	Dark green	15-17	Intermediate resistance - YVMV & ELCV
	NS 7772 (F1)	43-48	Tall, vigorous plant	Medium long	Very dark green	14-16	Intermediate resistance - YVMV & ELCV
	NS 7774 (F1)	43-48	Tall, vigorous plant	Medium	Dark green	14-16	Intermediate resistance - YVMV & ELCV
	NS 862 (F1)	43-48	Tall, vigorous plant	Medium long	Dark green	16-18	Intermediate resistance- YVMV & ELCV



# Cabbage





# (F1)Saurav

Exhibits excellent field holding capacity. This early maturing hybrid having dense & firm round head with bluish green colored leaves is suitable for long distance shipping .

C  
a  
b  
b  
a  
g  
e



## Early Maturity

Variety	Head shape	Maturity (Days after transplanting)	Foliage colour	Head firmness	Average head weight (grams)
(F1)Saurav	Round	55-60	Dark bluish green	Very good	1,300-1,500



## NS 43 (F1)

A uniform, vigorous hybrid with green to light green foliage having good wrapper leaves. Head is very flat & light green with medium firmness and good field holding capacity. Exhibits good tolerance to heat and black rot. It is a typical tropical cabbage suited for the fresh market.



## NS 183 (F1)

Bluish green in color, weighing 1.7 to 2kgs with very good field holding capacity and high level of disease tolerance. This hybrid is very uniform and matures in 60-65 days.



### Mid Maturity

Variety	Head shape	Maturity (Days after transplanting)	Foliage colour	Head firmness	Average head weight (Kg)
NS 43 (F1)	Flat	60-65	Green	Good	1.8 - 2.0
NS 183 (F1)	Round to semi round	60-65	Dark bluish green	Excellent	1.8 - 2.0



## NS 22 (F1)

A uniform vigorous hybrid with bluish-green foliage having good wrapper leaves. A late-season hybrid, maturing in 70 days, having a round to semi-round shape with excellent field-holding capacity..



### Late Maturity

Variety	Head shape	Maturity (Days after transplanting)	Follage colour	Head firmness	Average head weight (Kg)
NS 22 (F1)	Round to semi round	70-75	Bluish green	Very Good	1.8 - 2.0
<b>NEW</b> NS 1319 (F1)	Round to semi round	75-80	Bluish green	Excellent	2.3 - 2.5
NS 196 (F1)	High round	75-80	Bluish green	Very Good	1.3 - 1.5



# Cauliflower





# NS 106 (F1)

Vigorous, uniform hybrid having a dark bluish green foliage with excellent blanch. Produces excellent milky white curds with good firmness and density.



C  
a  
u  
l  
i  
f  
l  
o  
w  
e  
r

## Early Temperate / Temperate

Variety	Maturity (Days after transplanting)	Plant habit	Curd shape	Curd colour	Average curd weight (grams)
<b>NEW</b> NS 1118 (F1)	70-75	Erect	Dome	White	1,000 - 1,300
NS 95 (F1)	80-85	Erect	Dome	Milky white	1,600 - 1,800
NS 106 (F1)	80-85	Erect	Dome	Milky white	2,300 - 2,500



## NS 1119 (F1)

Intermediate resistance to Black rot, extra early maturity of 45-50 days. Semi-erect in nature with excellent semi-dome, creamy white curds with good self-blanching qualities.



## NS 1358 (F1)

Semi-erect plant type exhibiting intermediate resistance to Black rot, having 60-65 days maturity period. Bears dome-shaped, creamy white, compact curds.



## Tropical

	Variety	Maturity (Days after transplanting)	Plant habit	Curd shape	Curd colour	Average curd weight (grams)
NEW	NS 1119 (F1)	45-50	Semi erect	Semi dome	Creamy white	300-400
NEW	NS 1203 (F1)	55-60	Erect	Semi dome	Light creamy white	700-900
	NS 60N (F1)	55-60	Prostrate/Horizontal	Semi dome	Creamy white	500-700
	NS 135 (F1)	55-60	Semi erect	Dome	White	500-700
	NS 136 (F1)	55-60	Semi erect	Dome	Creamy white	700-900
	NS 133 (F1)	55-60	Semi erect	Dome	White	1,000-1,200
	HIMA (OP)	55-60	Semi erect	Dome	White	700-900
	NS 131 (F1)	60-65	Erect	Dome	White	1,000-1,200
NEW	NS 1358 (F1)	60-65	Semi erect	Dome	Creamy white	1,000-1,200
	NS 555 (F1)	65-70	Erect	Semi dome	White	1,300-1,500
NEW	NS 1114 (F1)	65-70	Semi erect	Dome	White	1,000-1,200









# Capsicum





## NS 280 (F1)

Blocky shiny fruits weighing about 200-220 grams with good keeping quality turning red at maturity. Tall & vigorous plant, best suited for protected cultivation



## NS 281 (F1)

Blocky shiny fruits weighing about 200-220 grams with good keeping quality turning yellow at maturity. Tall & vigorous plant, best suited for protected cultivation



## NS 82 (F1)

Big blocky firm fruits weighing about 240-260 grams with good keeping quality. Vigorous plant, best suitable for open field conditions.



Variety	Recommended cultivation	Maturity (Days after transplanting)	Fruit shape	Fruit colour	Average fruit weight (grams)
NS 280 (F1)	Protected	70-75	Blocky	Dark green to red	200-220
NS 281 (F1)	Protected	65-70	Blocky	Dark green to yellow	200-220
NS 82 (F1)	Open field	65-70	Big blocky	Dark green	240-260
NS 292 (F1)	Open field	70-75	Blocky	Dark green	180-200
SUPREME WONDER (F1)	Open field	70-75	Blocky	Dark green	160-180



# Carrot





# NS 9906 (F1)

Early maturing Kuroda-type hybrid suitable for both plains and hills. It can withstand high temperatures. 16 to 18 cms length weighing approx 150 grams with deep lustrous skin and red core.



C  
a  
r  
r  
o  
t

## Kuroda

Variety	Root shape	Root colour	Core size	Root length (cm)	Average root weight (grams)
NS 9906 (F1)	Conical	Orange	Very small	16-18	130-150
Super Kuroda (OP)	Conical	Orange	Small	15-20	120-140



## NS 9905 (F1)

A perfect cylindrical shaped, deep orange colored nantes, with good field holding capacity and attractive shiny roots.



## Nantes

Variety	Root shape	Root colour	Core size	Root length (cm)	Average root weight (grams)
AYESHA (F1)	Perfect cylindrical	Deep orange	Very small	18-20	140-160
NS 9905 (F1)	Perfect cylindrical	Deep orange	Very small	18-20	130-150







# Pumpkin





# NS 9521 (F1)

A confined vine growth pattern with high yield promoted by increased plant population per acre. Variably, it matures between 60 to 65 days and produces mottled green fruits weighing 1.8 to 2 kgs, with an average of 4 fruits per plant.



Variety	Maturity (Days after sowing)	Fruit shape	Fruit colour	Flesh colour	Fruit weight (Kg)	Recommended sowing window	Photosensitivity
<div>NEW</div> NS 9521 (F1)	60-65	Round to Flat	Mottled green	Orange yellow	1.5 - 2	Rabi (Sep-Jan), Kharif (Aug-Sep)	Insensitive
NS 9523 (F1)	75-80	Flat	Uniform Dark green	Deep Orange	4 - 5	Kharif (June-Aug), Rabi (Sep-Nov)	Sensitive
NS 9527 (F1)	70-75	Round to Flat	Mottled green	Orange yellow	4 - 5	Rabi (Sep-Jan), Summer (Feb-Mar), Kharif (Jun-Aug)	Insensitive



# Ridge Gourd





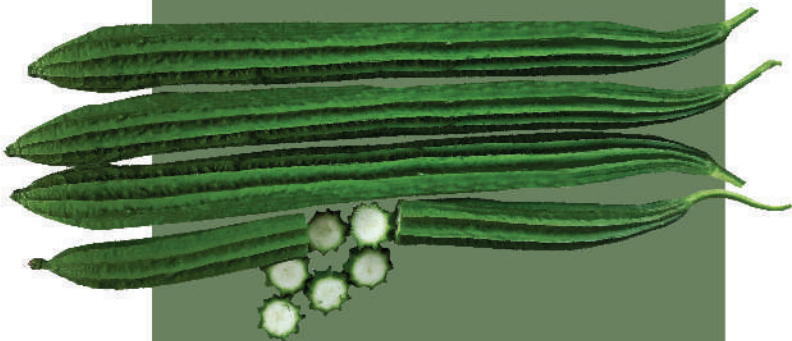
# NS 4789 (F1)

Prolific bearing hybrid that matures in 40-45 days from sowing. Bears 40-45 cms long, green cylindrical fruits and has a high level of tolerance to Downy Mildew and viruses.



# NS 4751 (F1)

Early maturing hybrid, high-yielding variety bearing dark green, cylindrical fruits weighing 200 to 250 grams each.



Varlety	Maturity (Days after sowing)	Fruit colour	Fruit shape	Fruit length (cm)	Fruit weight (grams)
<b>NEW</b> NS 4789 (F1)	40-45	Green	Almost cylindrical	40-45	200-250
<b>NEW</b> NS 4751 (F1)	40-45	Dark green	Cylindrical	40-45	200-250
NS 3 (F1)	40-45	Green	Almost cylindrical	45-50	250-300
NS 474 (F1)	40-45	Dark green	Almost cylindrical	40-45	200-250
NS 471 (F1)	40-45	Green	Cylindrical	25-30	150-200



# Sponge Gourd





## NS 441 (F1)

Early, vigorous continuous bearing hybrid with dark green cylindrical fruits.

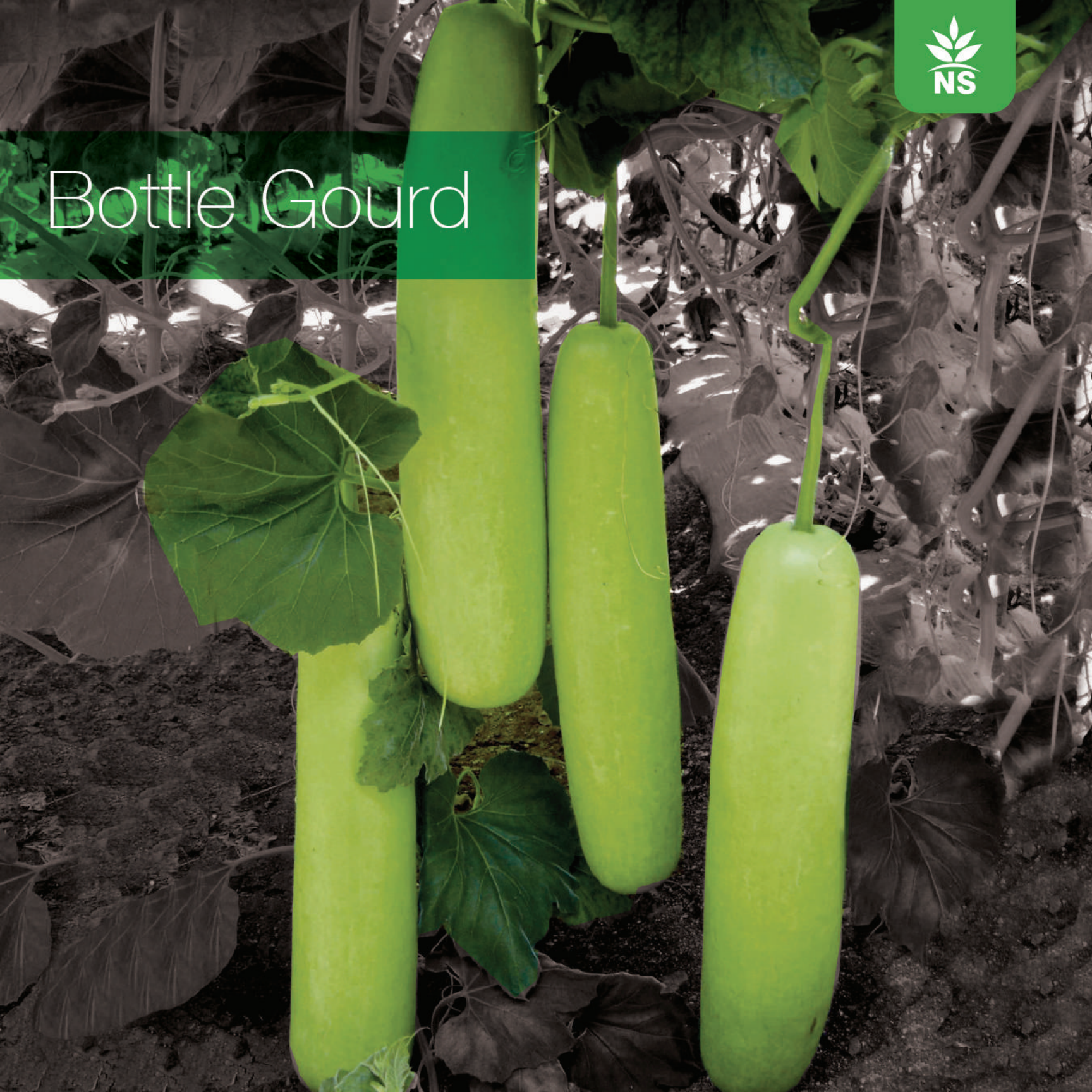
The flesh is white and tender with good cooking quality.



Variety	Maturity (Days after sowing)	Fruit colour	Flesh colour	Seed colour	Fruit shape	Fruit length (cm)	Average fruit weight (grams)
NS 1825 (F1)	40-45	Light green	White	White	Cylindrical	25-30	150-200
NS 441 (F1)	40-45	Dark green	White	Black	Cylindrical	25-30	200-250



# Bottle Gourd





## NS 439 (F1)

A heavy-yielding, vigorous plant with prolific bearing. Fruits are tender & cylindrical. The rind is smooth with uniform light green color and a white flesh with slow seed maturity.



Variety	Maturity (Days after sowing)	Fruit shape	Fruit colour	Specks on fruit	Fruit length (cm)	Fruit weight (grams)
KAVERI (F1)	50-55	Cylindrical	Uniform light green	No specks	25-30	300-400
NS 439 (F1)	40-45	Long cylindrical	Uniform green	No specks	45-50	500-550
NS 4830 (F1)	40-45	Long cylindrical	Uniform green	No specks	45-50	400-500
NS 4874 (F1)	40-45	Long cylindrical	Uniform green	No specks	55-60	400-500
NS 4813 (F1)	45-50	Round with neck	Uniform green	No specks	10-15	350-450



# Bitter Gourd





# NS 4501 (F1)

Prolific bearer exhibiting great vigor with dense plant habit. Produces glossy, spiny, green, short-spindle fruits with good shipping quality.



# NS 4509 (F1)

High-yielding, vigorous hybrid that starts bearing fruits in 50-55 days after sowing. Fruits are short, spindle-shaped with dark green skin having blunt tubercles on their surface.

Variety	Maturity (Days after sowing)	Shape	Spines	Fruit colour	Fruit length (cm)	Average fruit weight (grams)
NS 4501 (F1)	50-55	Short spindle	Sharp	Dark Green	8-10	40-50
NS 4509 (F1)	50-55	Short spindle	Blunt	Dark Green	10-12	70-90
<div>NEW</div> NS 4551 (F1)	45-50	Spindle	Blunt	Dark Green	13-15	70-90
<div>NEW</div> NS 4541 (F1)	45-50	Spindle	Smooth	Dark Green	14-16	80-90
<div>NEW</div> NS 4528 (F1)	50-55	Spindle	Blunt	Dark Green	20-22	120-130
<div>NEW</div> NS 4519 (F1)	55-60	Spindle	Blunt	Dark green	20-24	120-140



# NS 4529 (F1)

Prolific bearer exhibiting great vigor with dense plant habit. Produces glossy, spiny, green medium-long fruits with good shipping quality. Long-duration harvest



B  
i  
t  
t  
e  
r  
  
G  
o  
u  
r  
d

Variety	Maturity (Days after sowing)	Shape	Spines	Fruit colour	Fruit length (cm)	Average fruit weight (grams)
NS 4529 (F1)	55-60	Medium spindle	Sharp	Dark Green	16-18	120-150
NS 4503 (F1)	50-55	Medium spindle	Smooth	Dark Green	18-20	120-140
NS 435 (F1)	50-55	Medium spindle	Thick	White	18-20	175-200
NS 454 (F1)	55-60	Long spindle	Blunt	Dark Green	20-25	150-180
Parry (F1)	60-65	Long spindle	Blunt	Dark Green	25-30	150-200
NS 1024 (F1)	60-65	Long spindle	Blunt	Dark green	25-30	150-200
NS 463 (F1)	60-65	Long cone	Ribs with less bubbles	Light green	30-35	350-400







# Ash Gourd





## NS 4912 (F1)

Uniform square round, green fruit turning waxy white at maturity. Weighing 5 to 6 kgs with thick, milky white, smooth flesh and high flesh recovery.



Variety	Maturity (Days after sowing)	Fruit colour	Fruit shape	Fruit length (cm)	Average fruit weight (grams)	Recommended sowing season
NS 4912 (F1)	80-85	Green	Round	22-26	6,000-8,000	All year round
NS 4915 (F1)	75-80	Green	Oval	35-40	5,000-6,000	Kharif (June-Aug), Rabi (Sep-Nov)
NS 4984 (F1)	65-70	Green	Cylindrical	22-24	1,000-1,500	Kharif (June-Aug), Rabi (Sep-Nov)
NS 4996 (F1)	65-70	Light green	Cylindrical	24-26	1,500-2,000	Kharif (June-Aug), Rabi (Sep-Nov)





# Beetroot





# NS 694 (F1)

Smooth and uniform globe-shaped roots with dark red interiors

B  
e  
e  
t  
r  
o  
o  
t



Variety	Maturity (Days after sowing)	Foliage colour	Flesh colour	Root shape	Average root weight (grams)
MADHUR (OP)	110-120	Green	Dark Red	Round	100-120
NS 693 (F1)	100-110	Green	Very dark red	Round	160-170
NS 694 (F1)	100-110	Green	Very dark red	Round	170-180





# Sweet Corn





# NS 8601 (F1)

Compact cob with attractive golden yellow kernels having TSS in the range 15 -16%. Suitable for year round cultivation.

S  
w  
e  
e  
t  
  
C  
o  
r  
n



Variety	Maturity (Days after sowing)	Cob length (cm)	Cob diameter (cm)	Kernel colour	Kernel rows count	Average cob weight (grams)	Brix (%)
NS 8601 (F1)	75	20-22	4-5	Golden yellow	16	350-400	14



# Peas





## NS 1155 (OP)

Erect, high yielding and vigorous plant (first picking can be done at 95-100 days), dark green, excellent quality pods with a minimum of 8-10 grains per pod.



## NS 1100 (OP)

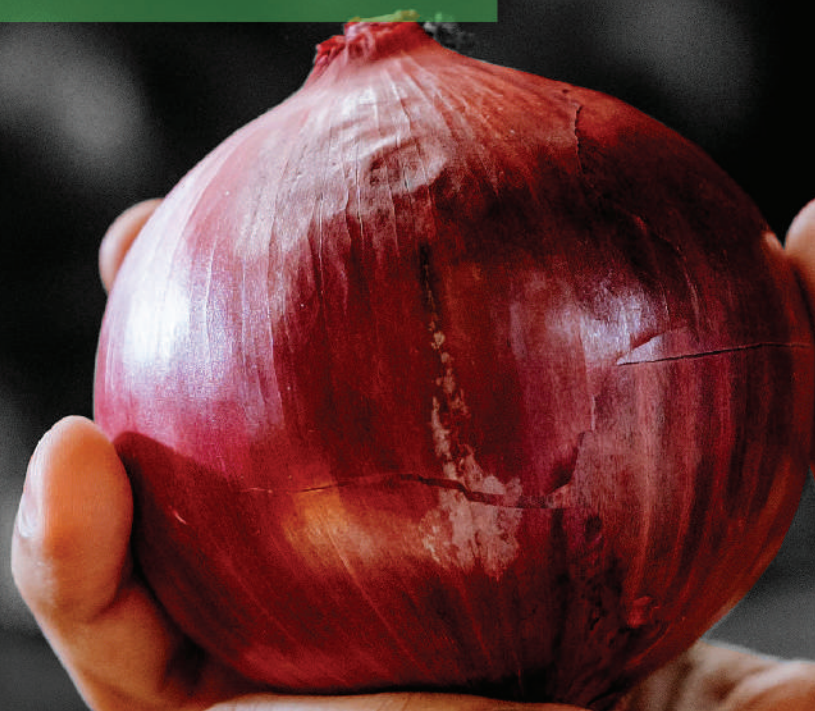
Dark green, slightly curved, spherical-shaped pods with wrinkled seeds exhibiting high-yielding characteristics.



Variety	Maturity (Days after sowing)	Plant habit	Pod shape	Pod length (cm)	Pod colour	Grains per pod	Season recommendation
NS 1155 (OP)	95-100	Erect	Slightly curved	10-12	Medium green	8-10	All states except HP - Rabi, HP - Kharif
NS 1100 (OP)	100-105	Erect	Slightly curved	9-11	Medium green	8-10	All states except HP - Rabi, HP - Kharif
<b>NEW</b> EARLY GOLD (OP)	50-55	Erect	Slightly curved	8-10	Medium green	7-9	All states except HP - Rabi, HP - Kharif



# Onion





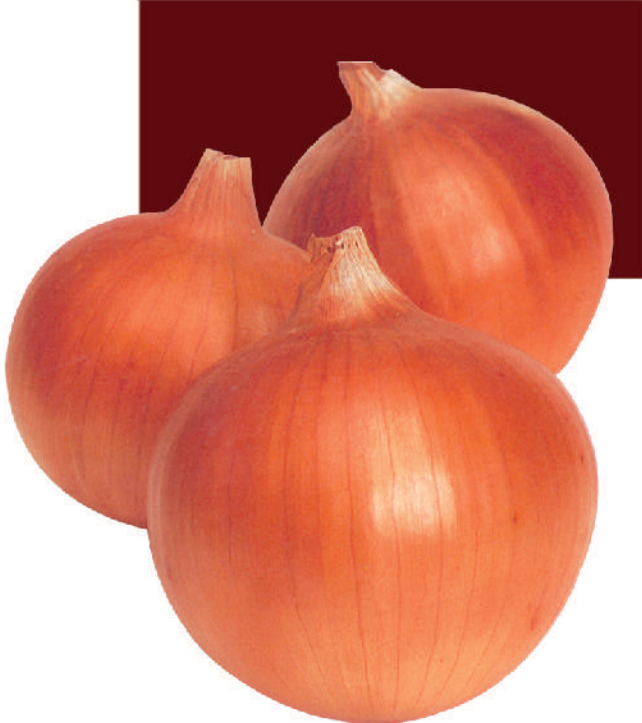
# NS 101 (OP)

High yielding hybrid bearing pungent, dark red, globe shaped bulbs.



# NS 102 (OP)

High yielding and uniform hybrid bearing light red, globe shaped bulbs with medium pungency.



O  
n  
i  
o  
n

Variety	Maturity (Days after sowing)	Bulb shape	Bulb colour	Average bulb weight (grams)
NS 101 (OP)	120-130	Globe	Dark red	70-80
NS 102 (OP)	130-140	Globe	Light red	65-70



# Coriander





## Surabhi (OP)

A very vigorous variety having excellent yield potential. Suitable for multiple cuts with very attractive, large, shiny leaves having good aroma. It is a late-bolting variety and can be grown round the year.



Varlety	Type	Maturity (Days after sowing)	Plant vigour	Follage colour	Stalk length (cm)
Surabhi (OP)	Multi cut	35	Good vigour	Dark green	20-25



# Marigold





## NS 1501 (F1)

A superior yielding, strong vigorous variety that is well-branched, has short internodes and exhibits good disease tolerance. It bears bright yellow flowers with good flower firmness that are suitable for long transportation.



## NS 1503 (F1)

A high-yielding variety suitable for long distance. This tall, vigorous plant bears medium-sized consistent double ball-shaped flowers. These orange-colored flowers exhibit good firmness (compactness) and have good disease tolerance.



Variety	Season (s)	Plant height* (cm)		Plant spread* (cm)		Flower colour	Flower size* (cm)		Transplanting to first flowering*		Avg. flower weight* (grams)
		Kharif season	Rabi season	Kharif season	Rabi season		Kharif season	Rabi season	Kharif season	Rabi season	
NS 1501 (F1)	Suitable for all seasons	80-90	60-70	70-75	60-65	Bright yellow	7-8	6-7	35	35	14-16
NS 1503 (F1)	Suitable for all seasons	80-90	60-70	70-75	60-65	Orange	7-8	6-7	30	30	11-13



**Uday Singh**  
Chairman

**Gurmukh S Roopra**  
Group CEO

## Marketing Team India

### President - Seeds Business

Sameer Sawant  
sameer@namdhariseeds.com

### Vice President Sales

Sanjay Patil  
+91 9589227134  
patil.sanjay@namdhariseeds.com

### Andhra Pradesh

Y Sreedhar  
+91 9652422778  
sreedhar@namdhariseeds.com

### Chhattisgarh & Madhya Pradesh

Yashwant Singh Rajput  
+91 9826125673  
yashwantsingh.rajput@namdhariseeds.com

### Gujarat

Dipesh Patel  
+91 8238665341  
dipesh.patel@namdhariseeds.com

### Haryana, Punjab

Jagdev Singh  
+91 9812059945  
jagdev@namdhariseeds.com

### Jharkhand

Amarendra Kumar  
+91 9572044413  
amarendra.kumar@namdhariseeds.com

### Karnataka

Manjunath T  
+91 9845470850  
manjunath@namdhariseeds.com

### Maharashtra

Suryakant Bhonde  
+91 8600012271  
surubhonde@namdhariseeds.com

### Odisha

Jayant Dash  
+91 9937052821  
jayant.dash@namdhariseeds.com

### Rajasthan

Shaleen Chandra  
+91 9887047422  
shaleen@namdhariseeds.com

### Tamil Nadu

Mohanraj  
+91 9442148514  
mohanraj@namdhariseeds.com

### UP East

Sunil Kumar Singh  
+91 9839963344  
sksingh@namdhariseeds.com

### UP West

Brajendra Kumar  
+91 7579433514  
brajendra@namdhariseeds.com

### West Bengal (Kolkata)

Avijit Jana  
+91 8697650672  
avijit.jana@namdhariseeds.com

### Zonal Incharge (North-East)

### West Bengal (Siliguri)

### Bihar

Dambar Dahal  
+91 8011603438  
dambar.dahal@namdhariseeds.com

### Corporate Sales Incharge

Shivbilas Singh  
+91 9910201494  
shivbilas@namdhariseeds.com

## Marketing Team International

### Middle East

#### Jordan

Munther Al Shawareb  
+962 3 981 996  
munther@namdhariseeds.com

#### Iraq

Munther Al Shawareb  
+962 3 981 996  
munther@namdhariseeds.com

#### Egypt

Kunal Sood  
+91 7355332411  
egypt@namdhariseeds.com

Hesham Mostafa Farag  
+20 101 150141  
egypt@namdhariseeds.com

Address -  
Namdhari Seeds Pvt. Ltd.,  
11, Ahmed wash street, Almaza,  
Heliopolis, Cairo, EGYPT

#### Turkey

Kunal Sood  
+91 7355332411  
turkey@namdhariseeds.com

Ayhan Ekici  
+90 242 321 1605  
turkey@namdhariseeds.com  
Namdhari Seeds Tohumculuk Tic Ltd.  
STI Meydankavagi Mah, Perge Bulvari  
Atmaca is merkezi, 74/10  
Muratpasa-Antalya/Turkey

### Southeast Asia

#### Vietnam

D. Jebaraj Joseph  
+84 91 8192247  
dj.joseph@namdhariseeds.com

### Myanmar

Tarunvir Singh Sandhu  
+91 87280 00390  
tarunvir@namdhariseeds.com

### Thailand

Tarunvir Singh Sandhu  
+91 87280 00390  
tarunvir@namdhariseeds.com

Janjarut Saedan  
+66 91 072 3663  
nssthailand@namdhariseeds.com

Address -  
Namdhari Siam Seeds Co., Ltd.  
217, MOO-3, Tambon – Kileg,  
Amphae-Maetang,  
Chiang Mai, Thailand-50150

### Indonesia

Mahesh Hanji  
+91 99805 47352  
indonesia@namdhariseeds.com

Fefy Revina  
+62 857 9122 7334  
indonesia@namdhariseeds.com

Address-  
PT Namdhari Seeds,  
Taman Sulfat VIII-H2, Purwantara  
Agung-Blingbing  
Malang, Indonesia-65141

### South Asia

#### Bangladesh

Kunal Sood  
+91 73553 32411  
kunal@namdhariseeds.com

Shahidul Islam  
+880 1760-300606  
Shahidul @namdhariseeds.com





#### Terminology used in Disease Resistance :

Regarding resistance to diseases mentioned in different crops, the terminologies/symbols used in this catalogue are based on ISF decision adopted in May 2005 - 'Definition of the terms describing the reaction of plants to pests or pathogens and to abiotic stresses for the vegetable seed industry' High/standard resistance (HR\*) : Plant varieties that highly restrict the growth and development of the specified pest or pathogen under normal pest or pathogen pressure when compared to susceptible varieties. These plant varieties may, however, exhibit some symptoms or damage under heavy pest or pathogen pressure. Moderate/Intermediate resistance (IR\*) : Plant varieties that restrict the growth and development of the specified pest or pathogen but may exhibit a greater range of symptoms or damage compared to high/standard resistant varieties. Moderately/intermediately resistant plant varieties will still show less severe symptoms or damage than susceptible plant varieties when grown under similar environmental conditions and/ or pest or pathogen pressure.

#### Caution :

Since crops are subject to many conditions beyond the sellers control, all seeds sold by us are sold as is (Tel Quell) without any warranty expressed or implied. By acceptance of our seeds and also by use of our seeds, the purchaser agrees that any liability of ours, whatsoever in nature or theory shall be limited to the amount of the purchase price.

The crop yield and performance indicated are based on trials conducted at our research farm. Field performance is subject to agroclimatic conditions and management practices adopted by the farmers.

#### Seed Count & Planting Guide

Sr. No	Crop	Seeds per gram (Approx.)	Spacing	Seed Rate kg per hectare
1	Tomato	250-280	80 cm x 60 cm	0.1
2	Watermelon	25-30	200 cm x 60 cm	1
3	Muskmelon	25-30	130-150 cm x 60 cm	1.25
4	Chilli	160-180	60 cm x 45 cm	0.3
5	Capsicum	160-180	45-60 cm x 30 cm	0.50 (OP), 0.30 (F1)
6	Cauliflower	300	60 cm x 30 cm	0.3
7	Cabbage	300	60 cm x 30 cm	0.22
8	Okra	15-18	30 cm x 15 cm (OP) 60 cm x 30 cm (F1)	8-10 (OP), 5 (F1)
9	Ridge Gourd	20-25	160-190 cm x 60 cm	1
10	Bottle Gourd	15-20	180-200 cm x 60 cm	1.25
11	Bitter Gourd	10-15	150-170 cm x 60 cm	1
12	Sponge Gourd	20-25	160-170 cm x 60 cm	1
13	Carrot	700	10-15 cm x 20 cm	5
14	Cucumber	25-30	120-140 cm x 60 cm	1.25
15	Coriander	80-10	10-15 cm x 10 cm	30-40
16	Onion	280-300	30 cm x 15 cm	8-10 (Direct sowing) 2(Transplanted)
17	Ash gourd	10-15	200cmx60cm	2.5
18	Sweet corn	8-10	45cm x 30cm	4-6
19	Peas	4-5	45cm x 20cm	20-30
20	Pumpkin	10-15	200cmx100cm	1-1.5
21	Beetroot	40-60	30cmx10cm	5-7

*Note: The above-mentioned values vary depending on variety, climate, soil type and season.*





**Namdhari Seeds™**  
Seeds for a better future

Uragahalli, Bidadi Post, Ramanagara Taluk, Bidadi - 562 109, Karnataka, India

Email: [info@namdhariseeds.com](mailto:info@namdhariseeds.com) | Call: +91-9845471271 / 72

Website: [www.namdhariseeds.com](http://www.namdhariseeds.com)